

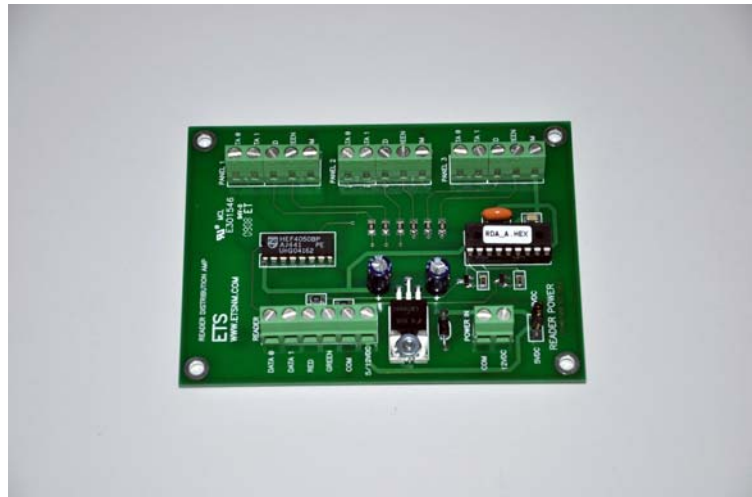
ETS

Electronic Technical Services Inc.
211 Conchas SE
Albuquerque, NM 87123
PH 505-888-3923 FAX 505-888-3926
Website: www.etsnm.com

RD1 Wiegand card reader distribution amplifier

Description

Distributes the data from one Wiegand reader to up to three data access control panels. Monitors the LED outputs of the data panels and outputs an LED "access granted" in the case of any panel valid card read or a "access denied" if all three data panels report non-valid card reads.



Includes

- RD1 Parallel reader interface board
- Installation instructions

Warranty 1 year parts and labor.

Made in USA

RD1 Features and Specifications

- Buffered reader data outputs.
- 2 LED input and output channels.
- Easy cable run termination.
- Power: 12VDC @ 10mA.
- 5v regulator for reader power
- Reverse polarity protected
- Dimensions: W 3.00 x 4.10