



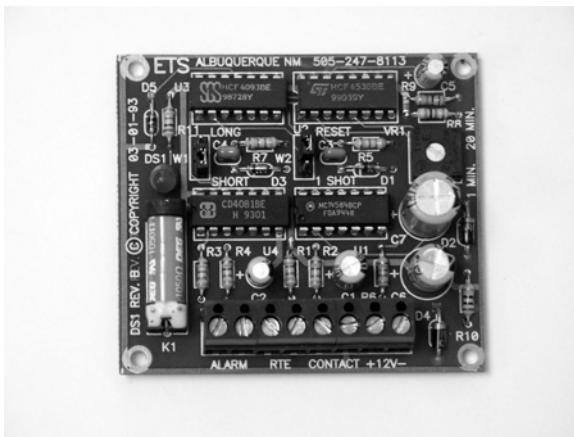
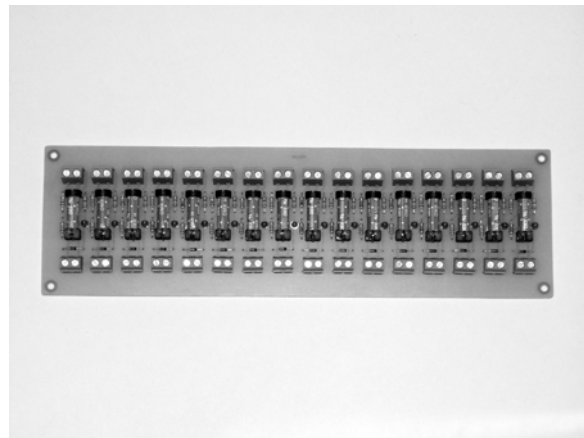
Miscellaneous Products

Electronic Technical Services Inc.
211 Conchas SE
Albuquerque, NM 87123
PH 505-888-3923 FAX 505-888-3926
Website: www.etsnm.com

RI16 Sixteen Channel Relay Board

16 zone relay board accepts any voltage from 5 to 24vdc and converts that signal into an isolated, dry contact, normally open output. The RI16 is typically used to interface fire alarm or industrial controls with an access control or alarm system. The RI16 can be ordered with EOL resistors for use in supervised alarm circuits.

- LED indicators for each channel.
- Power: 10-25ma per channel.
- Dimensions: W 3.00 x L 10.00



DS1 Door Contact Shunt Timer

The DS1 is designed for use on egress doors (with no card reader) equipped with magnetic locks or strikes, a request to exit device such as a PIR or electric panic bar, and a door contact switch. After an egress signal is received, the door contact shunt time begins. If the door is left open, after the timer times out, an alarm will result. If the door closes before the timer time ends, the timer is automatically reset and the contact is re-armed.

- LED alarm indicator
- N.C. dry contact alarm output and RTE.
- Jumper configurable for any application.
- Easy cable run terminations.
- Power: 12VDC @ 20mA.
- Dimensions: W 2.40 x L2.80

