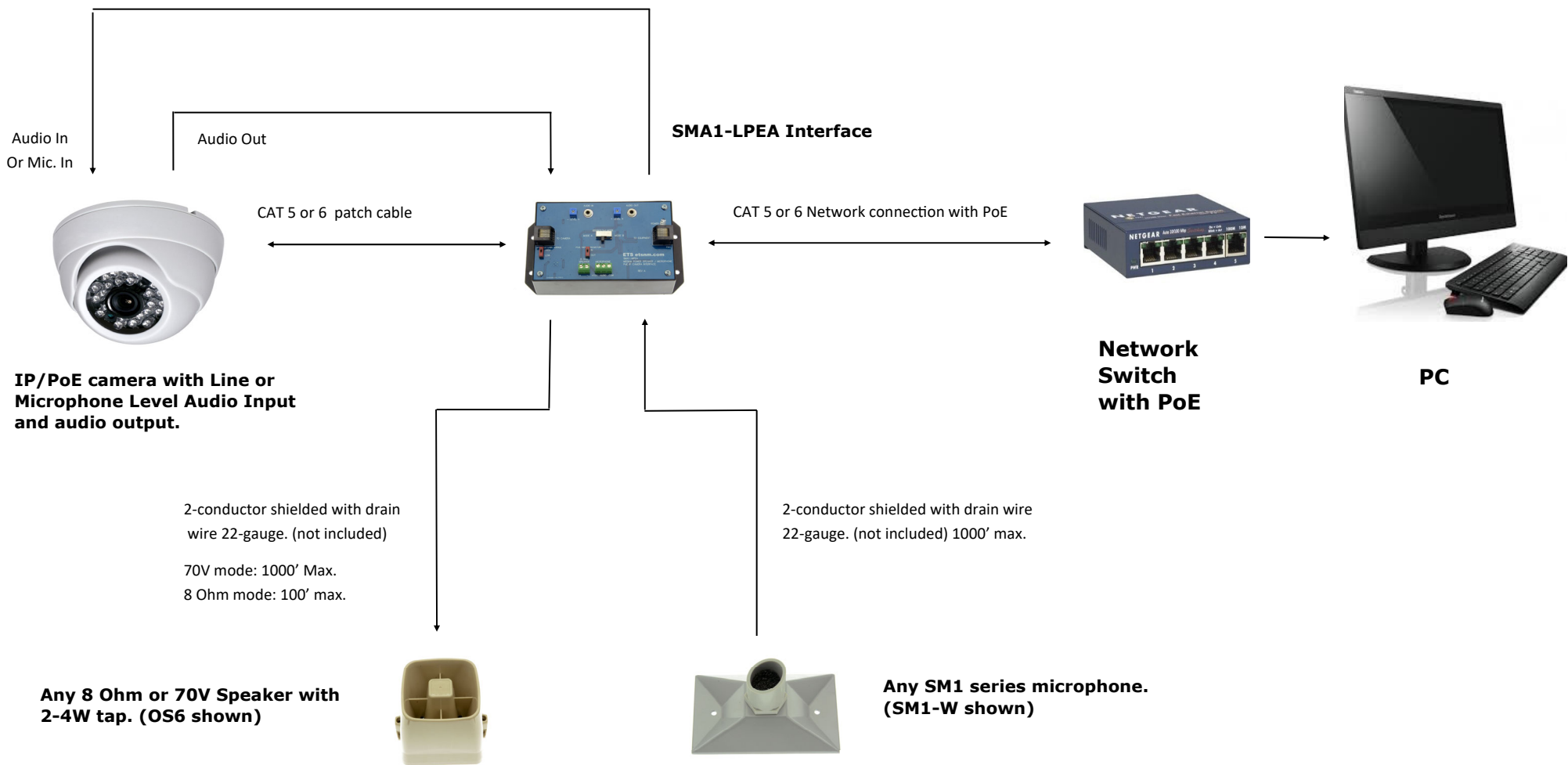


2ea. 6 ft. patch cords. Specify 3.5 mm, RCA or FL (flying leads)



IP/PoE camera with Line or Microphone Level Audio Input and audio output.

SMA1-LPEA Interface



Network Switch with PoE



PC

2-conductor shielded with drain wire 22-gauge. (not included)

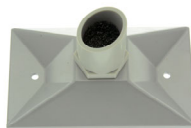
70V mode: 1000' Max.
8 Ohm mode: 100' max.

Any 8 Ohm or 70V Speaker with 2-4W tap. (OS6 shown)



2-conductor shielded with drain wire 22-gauge. (not included) 1000' max.

Any SM1 series microphone. (SM1-W shown)



Application Diagram 1 of 1 SMA1-LPEA

ETS