

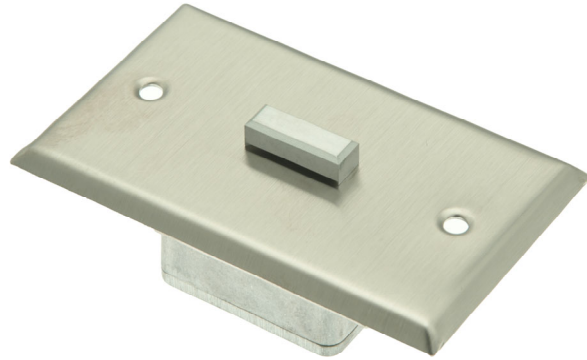
PM1-APE Flush Mount, 12-48Vdc Balanced Phantom Powered, Boundary Microphone

Description

The PM1-APE is a professional grade, stainless steel, Electret, Boundary type, microphone for use with professional audio mixing consoles, surveillance equipment and other devices that support 12 to 48vdc phantom powered, balanced output microphone.

Compatible with these ETS Interfaces:

PMI-1 PMI-4
SMEA-1P PACEQ-1



Includes:

- PM1-APE microphone
- Mounting screws.
- Warning label.
- Installation instructions.

Wiring requirements:

Microphone output: 2 conductor shielded (with drain wire) 22 gauge stranded. Max cable length 500'

Ordering Options:

- -LN Low noise high sensitivity microphone capsule.
- Black -BK, Ivory -IV or White -WH colored plate options

Caution

It is the responsibility of the installation company and end user to install this audio surveillance equipment in compliance with state and federal privacy laws. If you are unfamiliar with these laws, consult a qualified attorney.

PM1-APE Specifications

- Electret microphone element
- Boundary type pickup pattern
- Balanced output
- 12V-48V Phantom power input
- Current consumption: 6ma @ 48vdc
2ma @ 12vdc
- Low cut filter switch
- Frequency response:
Low cut out: 50-16Khz
Low cut in 500-16Khz
- S/N ratio more than 60db (80db LN option)
- Sensitivity -45db (-28db LN option)
- Low noise, balanced line driver
- Output impedance 500 Ohms
- Built in RFI filtering
- 3 position terminal block
- Operating temperature -25C to 70C
- Weight: .08lbs
- Single gang stainless steel plate, cast aluminum PCB enclosure
- Dimensions: L 4.5" x W 2.8" H 1.5"

Warranty 1 year parts and labor.

Made in USA